

# PARTS CATALOG R410A

**Outdoor unit  
[Model Name]**

PUAH-ZRP100VKA3

PUAH-ZRP125VKA3

PUAH-ZRP140VKA3

PUAH-ZRP100YKA3

PUAH-ZRP125YKA3

PUAH-ZRP140YKA3

PUAH-ZRP200YKA2

PUAH-ZRP250YKA2

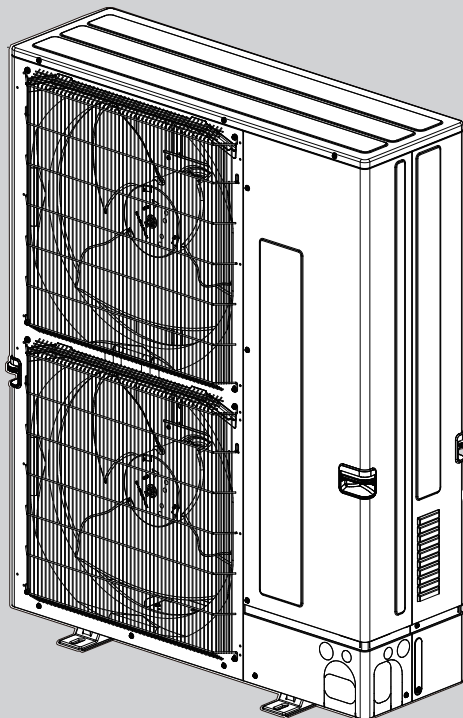
**[Service Ref.]**
**PUHZ-ZRP100VKA3.UK**
**PUHZ-ZRP125VKA3.UK**
**PUHZ-ZRP140VKA3.UK**
**PUHZ-ZRP100YKA3.UK**
**PUHZ-ZRP100YKA3R1.UK**
**PUHZ-ZRP125YKA3.UK**
**PUHZ-ZRP125YKA3R1.UK**
**PUHZ-ZRP140YKA3.UK**
**PUHZ-ZRP140YKA3R1.UK**
**PUHZ-ZRP200YKA2.UK**
**PUHZ-ZRP250YKA2.UK**
**Revision:**

- Added  
PUHZ-ZRP100YKA3R1.UK,  
PUHZ-ZRP125YKA3R1.UK, and  
PUHZ-ZRP140YKA3R1.UK in  
REVISED EDITION-A.
- Some other descriptions have  
been also modified.

OCB645 is void.

**Note:**

- RoHS compliant products  
have <G> mark on the spec  
name plate.




---

**CONTENTS**


---

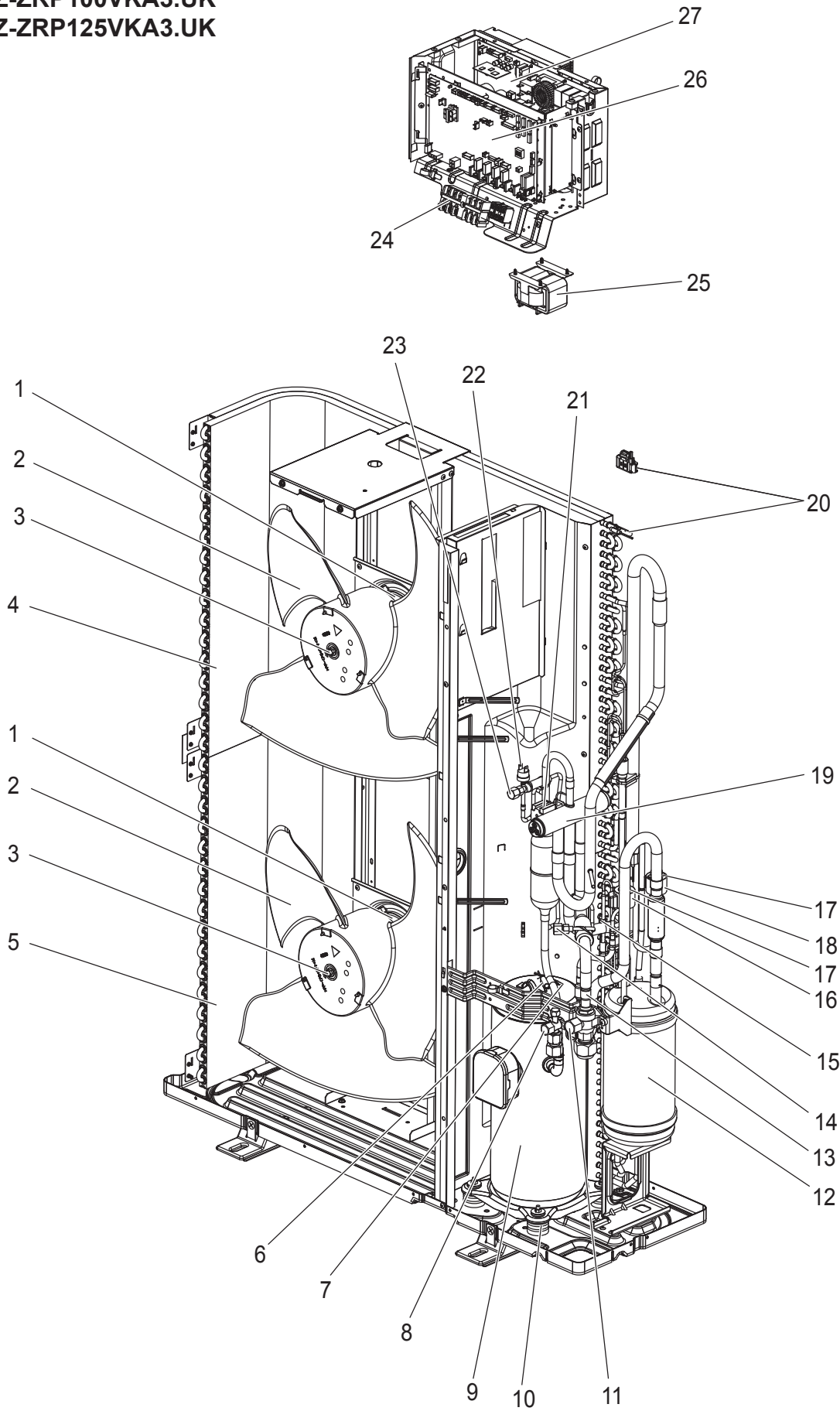
1. RoHS PARTS LIST ..... 2

**SERVICE MANUAL (OCH645)**

**FUNCTIONAL AND ELECTRICAL PARTS**

**PUHZ-ZRP100VKA3.UK**

**PUHZ-ZRP125VKA3.UK**

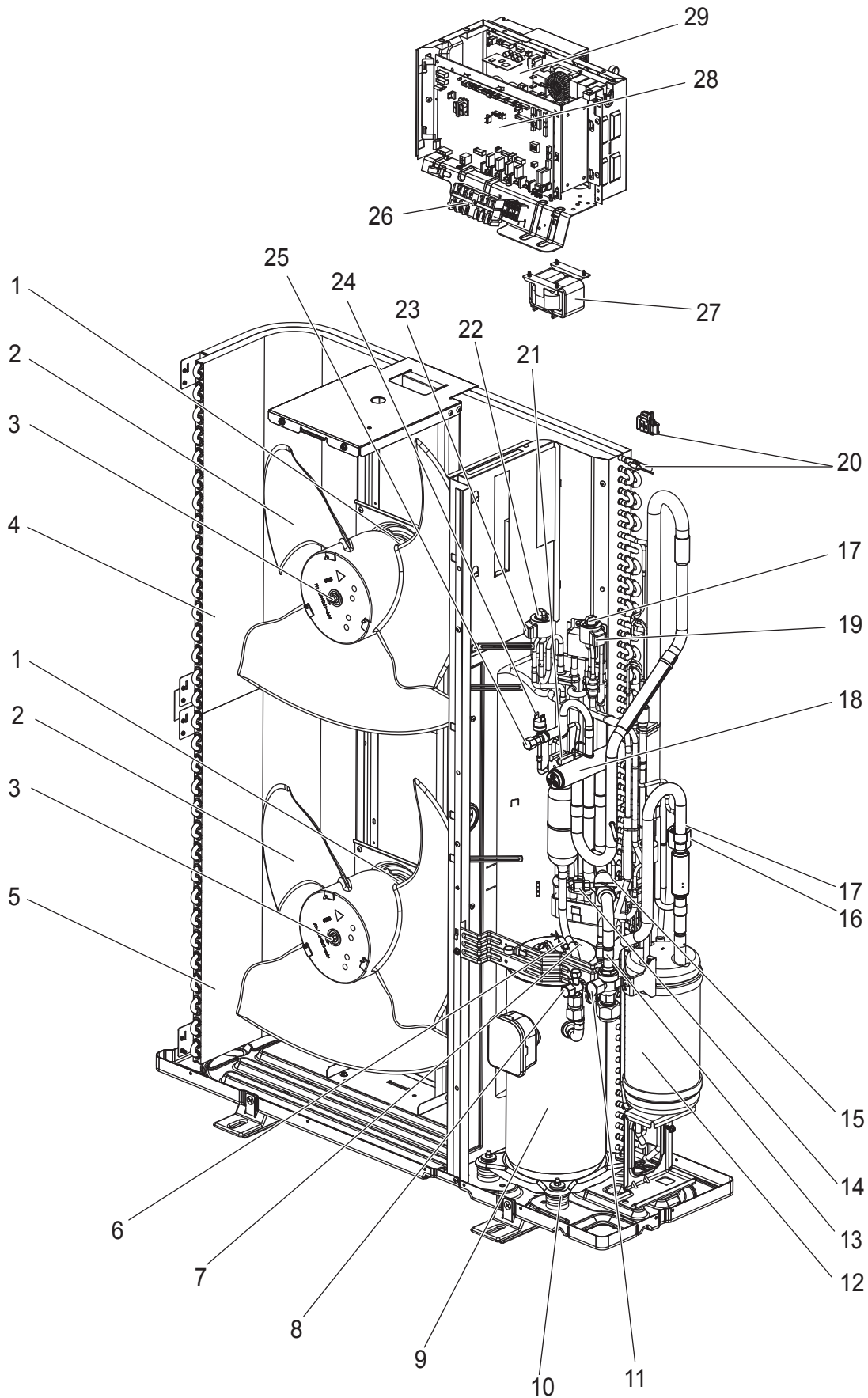


# RoHS PARTS LIST

| No. | RoHS | Parts No.   | Parts Name                  | Specification         | Q'ty/unit          |                    | Remarks<br>(Drawing No.) | Wiring<br>Diagram<br>Symbol |
|-----|------|-------------|-----------------------------|-----------------------|--------------------|--------------------|--------------------------|-----------------------------|
|     |      |             |                             |                       | PUHZ-ZRP100VKA3.UK | PUHZ-ZRP125VKA3.UK |                          |                             |
| 1   | G    | S70 E80 763 | FAN MOTOR                   |                       | 2                  | 2                  |                          | MF1,2                       |
| 2   | G    | S70 E50 115 | PROPELLER FAN               |                       | 2                  | 2                  |                          |                             |
| 3   | G    | S70 K01 097 | NUT                         |                       | 2                  | 2                  |                          |                             |
| 4   | G    | S70 E30 408 | HEAT EXCHANGER (TOP)        |                       | 1                  | 1                  |                          |                             |
| 5   | G    | S70 E35 408 | HEAT EXCHANGER (UNDER)      |                       | 1                  | 1                  |                          |                             |
| 6   | G    | S70 E57 202 | THERMISTOR                  | Discharge             | 1                  | 1                  |                          | TH4                         |
| 7   | G    | S70 E71 202 | THERMISTOR                  | Comp. surface         | 1                  | 1                  |                          | TH33                        |
| 8   | G    | S70 600 418 | STOP VALVE (LIQUID)         | 3/8                   | 1                  | 1                  |                          |                             |
| 9   | G    | S70 E30 400 | COMPRESSOR                  | ANB33FNFMT            | 1                  | 1                  |                          | MC                          |
| 10  | G    | S70 E02 004 | RUBBER MOUNT                | 1PC/ SET              | 4                  | 4                  |                          |                             |
| 11  | G    | S70 E06 411 | BALL VALVE (GAS)            | 5/8                   | 1                  | 1                  |                          |                             |
| 12  | G    | S70 E75 440 | POWER RECEIVER              |                       | 1                  | 1                  |                          |                             |
| 13  | G    | S70 36L 450 | STRAINER                    | 50#                   | 1                  | 1                  |                          |                             |
| 14  | G    | S70 E02 413 | CHARGE PLUG                 |                       | 1                  | 1                  |                          |                             |
| 15  | G    | S70 E58 202 | THERMISTOR                  | Liquid                | 1                  | 1                  |                          | TH3                         |
| 16  | G    | S70 E60 402 | LEV COIL                    | UKV-A296              | 1                  | 1                  | CONNECTOR: RED           | LEV-B                       |
| 17  | G    | S70 E90 401 | EXPANSION VALVE             | UKV-25D36             | 2                  | 2                  |                          |                             |
| 18  | G    | S70 E50 402 | LEV COIL                    | UKV-A295              | 1                  | 1                  | CONNECTOR: WHITE         | LEV-A                       |
| 19  | G    | S70 E05 403 | 4-WAY VALVE                 |                       | 1                  | 1                  |                          |                             |
| 20  | G    | S70 E31 202 | THERMISTOR                  | Ambient, 2-phase pipe | 1                  | 1                  |                          | TH6,7                       |
| 21  | G    | S70 E66 242 | SOLENOID COIL <4-WAY VALVE> |                       | 1                  | 1                  |                          | 21S4                        |
| 22  | G    | S70 E10 208 | HIGH PRESSURE SWITCH        | OFF 4.14 MPA          | 1                  | 1                  |                          | 63H                         |
| 23  | G    | S70 E03 413 | CHARGE PLUG                 |                       | 1                  | 1                  |                          |                             |
| 24  | G    | S70 E11 716 | TERMINAL BLOCK              | 6P (L,N,⊕,S1,S2,S3)   | 1                  | 1                  |                          | TB1                         |
| 25  | G    | S70 K21 259 | REACTOR                     | 0.5 MH                | 1                  | 1                  |                          | DCL                         |
| 26  | G    | S70 E65 315 | CONTROLLER CIRCUIT BOARD    |                       | 1                  | 1                  |                          | C.B.                        |
| 27  | G    | S70 E25 313 | POWER CIRCUIT BOARD         |                       | 1                  | 1                  |                          | P.B.                        |

# RoHS PARTS LIST

## FUNCTIONAL AND ELECTRICAL PARTS PUHZ-ZRP140VKA3.UK



# RoHS PARTS LIST

| No. | RoHS | Parts No.   | Parts Name                  | Specification         | Q'ty/unit          | Remarks<br>(Drawing No.) | Wiring<br>Diagram<br>Symbol |
|-----|------|-------------|-----------------------------|-----------------------|--------------------|--------------------------|-----------------------------|
|     |      |             |                             |                       | PUHZ-ZRP140VKA3.UK |                          |                             |
| 1   | G    | S70 E80 763 | FAN MOTOR                   |                       | 2                  |                          | MF1,2                       |
| 2   | G    | S70 E50 115 | PROPELLER FAN               |                       | 2                  |                          |                             |
| 3   | G    | S70 K01 097 | NUT                         |                       | 2                  |                          |                             |
| 4   | G    | S70 E30 408 | HEAT EXCHANGER (TOP)        |                       | 1                  |                          |                             |
| 5   | G    | S70 E35 408 | HEAT EXCHANGER (UNDER)      |                       | 1                  |                          |                             |
| 6   | G    | S70 E57 202 | THERMISTOR                  | Discharge             | 1                  |                          | TH4                         |
| 7   | G    | S70 E71 202 | THERMISTOR                  | Comp. surface         | 1                  |                          | TH33                        |
| 8   | G    | S70 600 418 | STOP VALVE (LIQUID)         | 3/8                   | 1                  |                          |                             |
| 9   | G    | S70 E30 400 | COMPRESSOR                  | ANB33FNFM             | 1                  |                          | MC                          |
| 10  | G    | S70 E02 004 | RUBBER MOUNT                | 1PC/ SET              | 4                  |                          |                             |
| 11  | G    | S70 E06 411 | BALL VALVE (GAS)            | 5/8                   | 1                  |                          |                             |
| 12  | G    | S70 E75 440 | POWER RECEIVER              |                       | 1                  |                          |                             |
| 13  | G    | S70 36L 450 | STRAINER                    | 50#                   | 1                  |                          |                             |
| 14  | G    | S70 E02 413 | CHARGE PLUG                 |                       | 1                  |                          |                             |
| 15  | G    | S70 E58 202 | THERMISTOR                  | Liquid                | 1                  |                          | TH3                         |
| 16  | G    | S70 E50 402 | LEV COIL                    | UKV-A295              | 1                  | CONNECTOR: WHITE         | LEV-A                       |
| 17  | G    | S70 E90 401 | EXPANSION VALVE             | UKV-25D36             | 2                  |                          |                             |
| 18  | G    | S70 E05 403 | 4-WAY VALVE                 |                       | 1                  |                          |                             |
| 19  | G    | S70 E60 402 | LEV COIL                    | UKV-A296              | 1                  | CONNECTOR: RED           | LEV-B                       |
| 20  | G    | S70 E31 202 | THERMISTOR                  | Ambient, 2-phase pipe | 1                  |                          | TH6,7                       |
| 21  | G    | S70 E66 242 | SOLENOID COIL <4-WAY VALVE> |                       | 1                  |                          | 21S4                        |
| 22  | G    | S70 E95 401 | EXPANSION VALVE             | UKV-18D124            | 1                  |                          | LEV-C                       |
| 23  | G    | S70 E77 402 | LEV COIL                    | UK-A213               | 1                  | CONNECTOR: BLUE          | LEV-C                       |
| 24  | G    | S70 E10 208 | HIGH PRESSURE SWITCH        | OFF 4.14 MPA          | 1                  |                          | 63H                         |
| 25  | G    | S70 E03 413 | CHARGE PLUG                 |                       | 1                  |                          |                             |
| 26  | G    | S70 E11 716 | TERMINAL BLOCK              | 6P (L,N,⊕,S1,S2,S3)   | 1                  |                          | TB1                         |
| 27  | G    | S70 K21 259 | REACTOR                     | 0.5 MH                | 1                  |                          | DCL                         |
| 28  | G    | S70 E65 315 | CONTROLLER CIRCUIT BOARD    |                       | 1                  |                          | C.B.                        |
| 29  | G    | S70 E25 313 | POWER CIRCUIT BOARD         |                       | 1                  |                          | P.B.                        |

# RoHS PARTS LIST

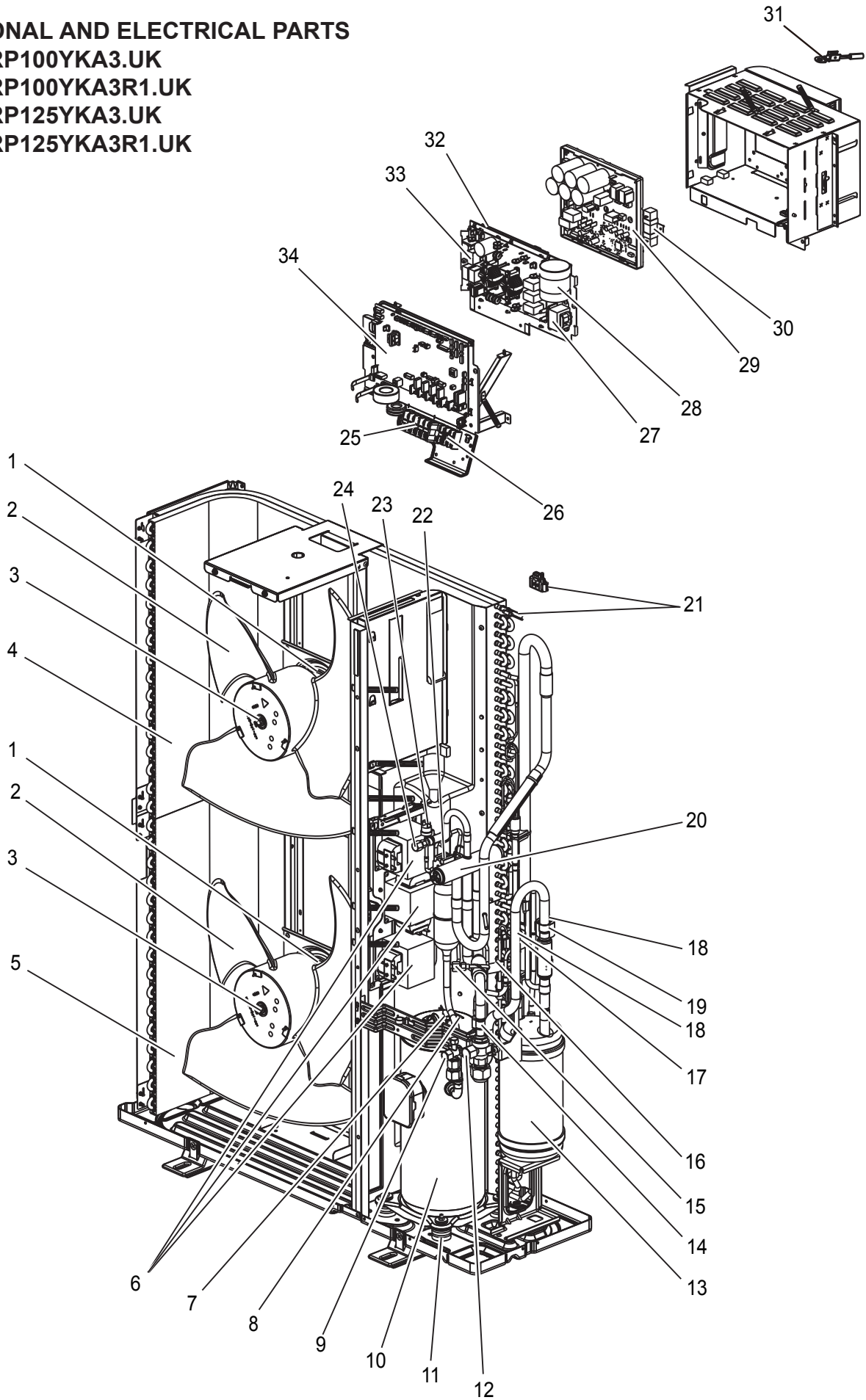
## FUNCTIONAL AND ELECTRICAL PARTS

PUHZ-ZRP100YKA3.UK

PUHZ-ZRP100YKA3R1.UK

PUHZ-ZRP125YKA3.UK

PUHZ-ZRP125YKA3R1.UK



# RoHS PARTS LIST

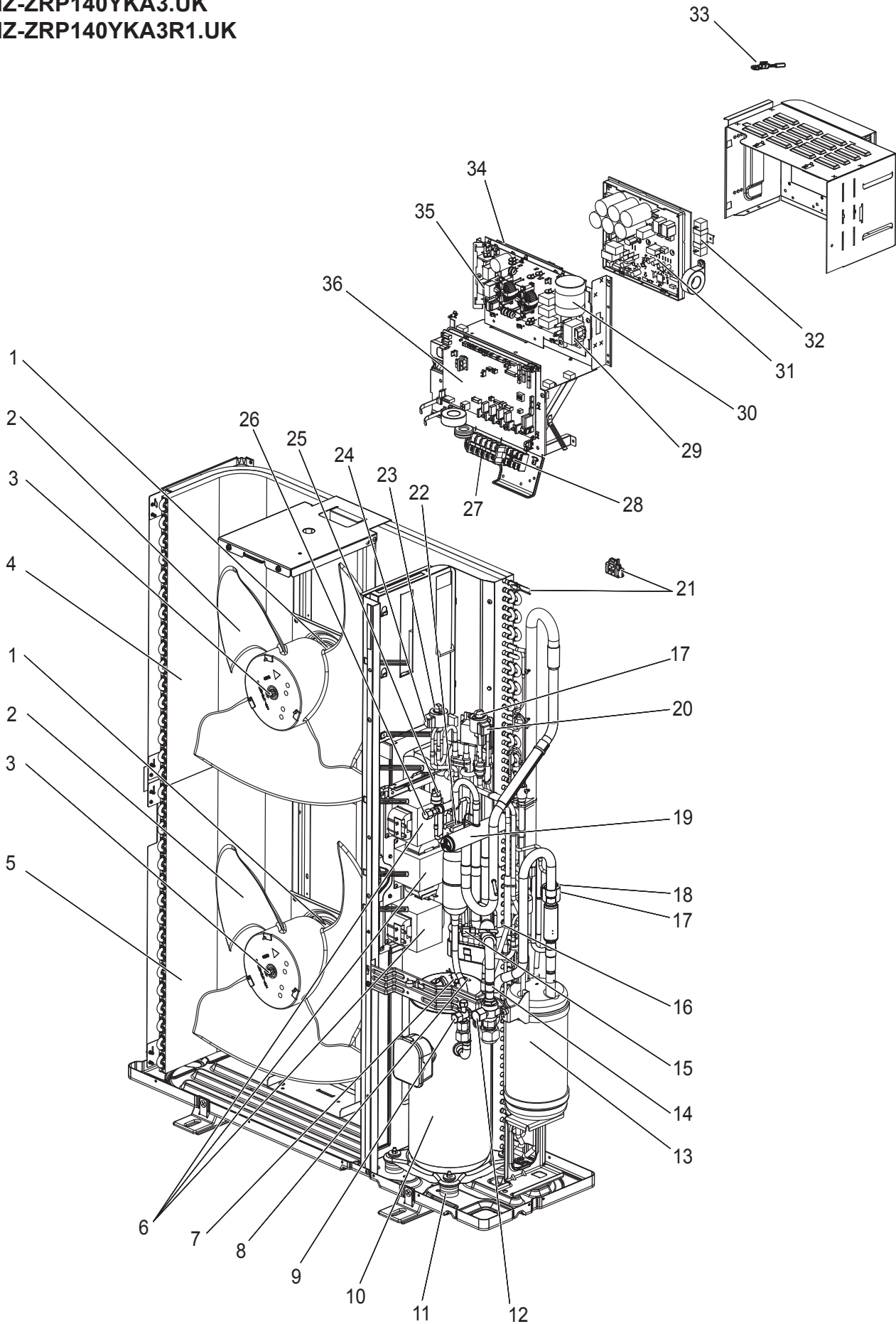
| No. | RoHS | Parts No.   | Parts Name                  | Specification         | Q'ty/unit          |                      |                    |                      | Remarks<br>(Drawing No.) | Wiring<br>Diagram<br>Symbol |
|-----|------|-------------|-----------------------------|-----------------------|--------------------|----------------------|--------------------|----------------------|--------------------------|-----------------------------|
|     |      |             |                             |                       | PUHZ-ZRP100YKA3.UK | PUHZ-ZRP100YKA3R1.UK | PUHZ-ZRP125YKA3.UK | PUHZ-ZRP125YKA3R1.UK |                          |                             |
| 1   | G    | S70 E80 763 | FAN MOTOR                   |                       | 2                  | 2                    | 2                  | 2                    |                          | MF1,2                       |
| 2   | G    | S70 E50 115 | PROPELLER FAN               |                       | 2                  | 2                    | 2                  | 2                    |                          |                             |
| 3   | G    | S70 K01 097 | NUT                         |                       | 2                  | 2                    | 2                  | 2                    |                          |                             |
| 4   | G    | S70 E30 408 | HEAT EXCHANGER (TOP)        |                       | 1                  | 1                    | 1                  | 1                    |                          |                             |
| 5   | G    | S70 E35 408 | HEAT EXCHANGER (UNDER)      |                       | 1                  | 1                    | 1                  | 1                    |                          |                             |
| 6   | G    | S70 K70 259 | REACTOR                     |                       | 3                  | 3                    |                    |                      |                          | ACL1, 2, 3                  |
|     | G    | S70 K75 259 | REACTOR                     |                       |                    |                      | 3                  | 3                    |                          | ACL1, 2, 3                  |
| 7   | G    | S70 E59 202 | THERMISTOR                  | Discharge             | 1                  | 1                    | 1                  | 1                    |                          | TH4                         |
| 8   | G    | S70 E72 202 | THERMISTOR                  | Comp. surface         | 1                  | 1                    | 1                  | 1                    |                          | TH33                        |
| 9   | G    | S70 600 418 | STOP VALVE (LIQUID)         | 3/8                   | 1                  | 1                    | 1                  | 1                    |                          |                             |
| 10  | G    | S70 E40 400 | COMPRESSOR                  | ANB33FNCMT            | 1                  | 1                    | 1                  | 1                    |                          | MC                          |
| 11  | G    | S70 E02 004 | RUBBER MOUNT                | 1PC/ SET              | 4                  | 4                    | 4                  | 4                    |                          |                             |
| 12  | G    | S70 E06 411 | BALL VALVE (GAS)            | 5/8                   | 1                  | 1                    | 1                  | 1                    |                          |                             |
| 13  | G    | S70 E75 440 | POWER RECEIVER              |                       | 1                  | 1                    | 1                  | 1                    |                          |                             |
| 14  | G    | S70 36L 450 | STRAINER                    | 50#                   | 1                  | 1                    | 1                  | 1                    |                          |                             |
| 15  | G    | S70 E02 413 | CHARGE PLUG                 |                       | 1                  | 1                    | 1                  | 1                    |                          |                             |
| 16  | G    | S70 E37 202 | THERMISTOR                  | Liquid                | 1                  | 1                    | 1                  | 1                    |                          | TH3                         |
| 17  | G    | S70 E60 402 | LEV COIL                    | UKV-A296              | 1                  | 1                    | 1                  | 1                    | CONNECTOR: RED           | LEV-B                       |
| 18  | G    | S70 E90 401 | EXPANSION VALVE             | UKV-25D36             | 2                  | 2                    | 2                  | 2                    |                          |                             |
| 19  | G    | S70 E50 402 | LEV COIL                    | UKV-A295              | 1                  | 1                    | 1                  | 1                    | CONNECTOR: WHITE         | LEV-A                       |
| 20  | G    | S70 E05 403 | 4-WAY VALVE                 |                       | 1                  | 1                    | 1                  | 1                    |                          |                             |
| 21  | G    | S70 E60 202 | THERMISTOR                  | Ambient, 2-phase pipe | 1                  | 1                    | 1                  | 1                    |                          | TH6,7                       |
| 22  | G    | S70 E66 242 | SOLENOID COIL <4-WAY VALVE> |                       | 1                  | 1                    | 1                  | 1                    |                          | 21S4                        |
| 23  | G    | S70 E10 208 | HIGH PRESSURE SWITCH        | OFF 4.1 4 MPA         | 1                  | 1                    | 1                  | 1                    |                          | 63H                         |
| 24  | G    | S70 E03 413 | CHARGE PLUG                 |                       | 1                  | 1                    | 1                  | 1                    |                          |                             |
| 25  | G    | S70 E09 716 | TERMINAL BLOCK              | 5P (L1, L2, L3, N,⊕)  | 1                  | 1                    | 1                  | 1                    |                          | TB1                         |
| 26  | G    | S70 E08 716 | TERMINAL BLOCK              | 3P (S1,S2,S3)         | 1                  | 1                    | 1                  | 1                    |                          | TB2                         |
| 27  | G    | S70 K90 259 | REACTOR                     |                       | 1                  |                      | 1                  |                      |                          | ACL4                        |
|     | G    | S70 K25 259 | REACTOR                     |                       |                    | 1                    |                    | 1                    |                          | ACL4                        |
| 28  | G    | S70 E71 255 | CAPACITOR                   |                       | 1                  | 1                    | 1                  | 1                    |                          | CK                          |
| 29  | G    | S70 E35 313 | POWER CIRCUIT BOARD         |                       | 1                  | 1                    | 1                  | 1                    |                          | P.B.                        |
| 30  | G    | S70 E20 234 | RESISTOR                    |                       | 1                  | 1                    | 1                  | 1                    |                          | RS                          |
| 31  | G    | S70 E55 202 | THERMISTOR (HEATSINK)       |                       | 1                  | 1                    | 1                  | 1                    |                          | TH8                         |
| 32  | G    | S70 E75 313 | CONVERTER CIRCUIT BOARD     |                       | 1                  | 1                    | 1                  | 1                    |                          | CONV.B.                     |
| 33  | G    | S70 E50 346 | NOISE FILTER CIRCUIT BOARD  |                       | 1                  |                      | 1                  |                      |                          | N.F.                        |
|     | G    | S70 E44 346 | NOISE FILTER CIRCUIT BOARD  |                       |                    | 1                    |                    | 1                    |                          | N.F.                        |
| 34  | G    | S70 E65 315 | CONTROLLER CIRCUIT BOARD    |                       | 1                  | 1                    | 1                  | 1                    |                          | C.B.                        |

# RoHS PARTS LIST

## FUNCTIONAL AND ELECTRICAL PARTS

PUHZ-ZRP140YKA3.UK

PUHZ-ZRP140YKA3R1.UK





# RoHS PARTS LIST

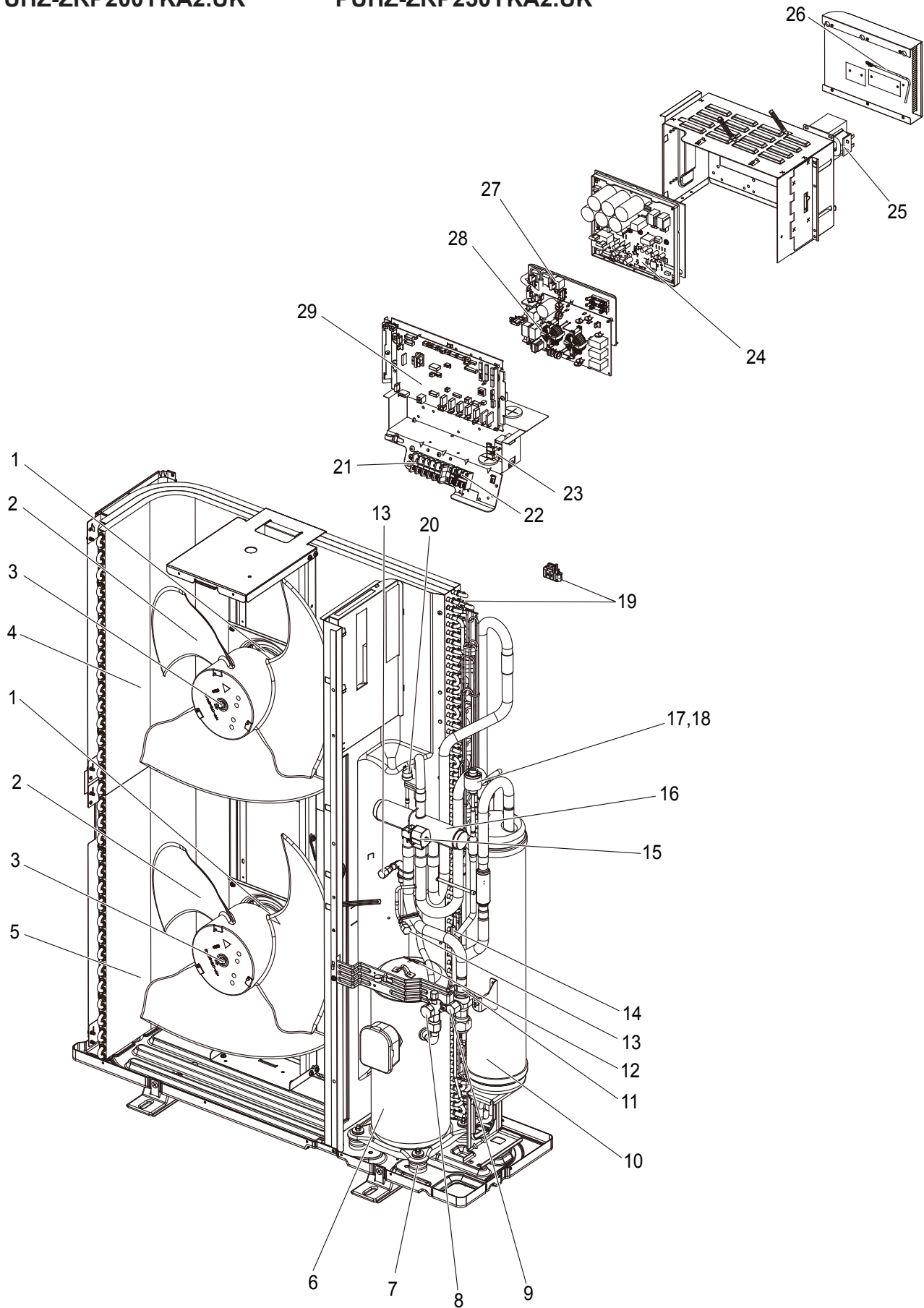
| No. | RoHS | Parts No.   | Parts Name                  | Specification         | Q'ty/unit          |                      | Remarks<br>(Drawing No.) | Wiring<br>Diagram<br>Symbol |
|-----|------|-------------|-----------------------------|-----------------------|--------------------|----------------------|--------------------------|-----------------------------|
|     |      |             |                             |                       | PUHZ-ZRP140YKA3.UK | PUHZ-ZRP140YKA3R1.UK |                          |                             |
| 1   | G    | S70 E80 763 | FAN MOTOR                   |                       | 2                  | 2                    |                          | MF1,2                       |
| 2   | G    | S70 E50 115 | PROPELLER FAN               |                       | 2                  | 2                    |                          |                             |
| 3   | G    | S70 K01 097 | NUT                         |                       | 2                  | 2                    |                          |                             |
| 4   | G    | S70 E30 408 | HEAT EXCHANGER (TOP)        |                       | 1                  | 1                    |                          |                             |
| 5   | G    | S70 E35 408 | HEAT EXCHANGER (UNDER)      |                       | 1                  | 1                    |                          |                             |
| 6   | G    | S70 K80 259 | REACTOR                     |                       | 3                  | 3                    |                          | ACL1, 2, 3                  |
| 7   | G    | S70 E59 202 | THERMISTOR                  | Discharge             | 1                  | 1                    |                          | TH4                         |
| 8   | G    | S70 E72 202 | THERMISTOR                  | Comp. surface         | 1                  | 1                    |                          | TH33                        |
| 9   | G    | S70 600 418 | STOP VALVE (LIQUID)         | 3/8                   | 1                  | 1                    |                          |                             |
| 10  | G    | S70 E40 400 | COMPRESSOR                  | ANB33FNCMT            | 1                  | 1                    |                          | MC                          |
| 11  | G    | S70 E02 004 | RUBBER MOUNT                | 1PC/ SET              | 4                  | 4                    |                          |                             |
| 12  | G    | S70 E06 411 | BALL VALVE (GAS)            | 5/8                   | 1                  | 1                    |                          |                             |
| 13  | G    | S70 E75 440 | POWER RECEIVER              |                       | 1                  | 1                    |                          |                             |
| 14  | G    | S70 36L 450 | STRAINER                    | 50#                   | 1                  | 1                    |                          |                             |
| 15  | G    | S70 E02 413 | CHARGE PLUG                 |                       | 1                  | 1                    |                          |                             |
| 16  | G    | S70 E37 202 | THERMISTOR                  | Liquid                | 1                  | 1                    |                          | TH3                         |
| 17  | G    | S70 E90 401 | EXPANSION VALVE             | UKV-25D36             | 2                  | 2                    |                          |                             |
| 18  | G    | S70 E50 402 | LEV COIL                    | UKV-A295              | 1                  | 1                    | CONNECTOR: WHITE         | LEV-A                       |
| 19  | G    | S70 E05 403 | 4-WAY VALVE                 |                       | 1                  | 1                    |                          |                             |
| 20  | G    | S70 E60 402 | LEV COIL                    | UKV-A296              | 1                  | 1                    | CONNECTOR: RED           | LEV-B                       |
| 21  | G    | S70 E60 202 | THERMISTOR                  | Ambient, 2-phase pipe | 1                  | 1                    |                          | TH6,7                       |
| 22  | G    | S70 E66 242 | SOLENOID COIL <4-WAY VALVE> |                       | 1                  | 1                    |                          | 21S4                        |
| 23  | G    | S70 E95 401 | EXPANSION VALVE             | UKV-18D124            | 1                  | 1                    |                          |                             |
| 24  | G    | S70 E77 402 | LEV COIL                    |                       | 1                  | 1                    | CONNECTOR: BLUE          | LEV-C                       |
| 25  | G    | S70 E10 208 | HIGH PRESSURE SWITCH        | OFF 4.14 MPA          | 1                  | 1                    |                          | 63H                         |
| 26  | G    | S70 E03 413 | CHARGE PLUG                 |                       | 1                  | 1                    |                          |                             |
| 27  | G    | S70 E09 716 | TERMINAL BLOCK              | 5P (L1, L2, L3, N, ⊕) | 1                  | 1                    |                          | TB1                         |
| 28  | G    | S70 E08 716 | TERMINAL BLOCK              | 3P (S1,S2,S3)         | 1                  | 1                    |                          | TB2                         |
| 29  | G    | S70 K90 259 | REACTOR                     |                       | 1                  |                      |                          | ACL4                        |
|     | G    | S70 K25 259 | REACTOR                     |                       |                    | 1                    |                          | ACL4                        |
| 30  | G    | S70 E71 255 | CAPACITOR                   |                       | 1                  | 1                    |                          | CK                          |
| 31  | G    | S70 E35 313 | POWER CIRCUIT BOARD         |                       | 1                  | 1                    |                          | P.B.                        |
| 32  | G    | S70 E20 234 | RESISTOR                    |                       | 1                  | 1                    |                          | RS                          |
| 33  | G    | S70 E55 202 | THERMISTOR                  | Heat sink             | 1                  | 1                    |                          | TH8                         |
| 34  | G    | S70 E75 313 | CONVERTER CIRCUIT BOARD     |                       | 1                  | 1                    |                          | CONV.B.                     |
| 35  | G    | S70 E50 346 | NOISE FILTER CIRCUIT BOARD  |                       | 1                  |                      |                          | N.F.                        |
|     | G    | S70 E44 346 | NOISE FILTER CIRCUIT BOARD  |                       |                    | 1                    |                          | N.F.                        |
| 36  | G    | S70 E65 315 | CONTROLLER CIRCUIT BOARD    |                       | 1                  | 1                    |                          | C.B.                        |

# RoHS PARTS LIST

## FUNCTIONAL AND ELECTRICAL PARTS

PUHZ-ZRP200YKA2.UK

PUHZ-ZRP250YKA2.UK



# RoHS PARTS LIST

| No. | RoHS | Parts No.   | Parts Name                  | Specification         | Q'ty/unit          |                    | Remarks<br>(Drawing No.) | Wiring<br>Diagram<br>Symbol |       |
|-----|------|-------------|-----------------------------|-----------------------|--------------------|--------------------|--------------------------|-----------------------------|-------|
|     |      |             |                             |                       | PUHZ-ZRP200YKA2.UK | PUHZ-ZRP250YKA2.UK |                          |                             |       |
| 1   | G    | S70 E90 763 | FAN MOTOR                   |                       |                    | 2                  | 2                        |                             | MF1,2 |
| 2   | G    | S70 E50 115 | PROPELLER FAN               |                       |                    | 2                  | 2                        |                             |       |
| 3   | G    | S70 K01 097 | NUT                         |                       |                    | 2                  | 2                        |                             |       |
| 4   | G    | S70 E36 408 | HEAT EXCHANGER (TOP)        |                       |                    | 1                  | 1                        |                             |       |
| 5   | G    | S70 E37 408 | HEAT EXCHANGER (UNDER)      |                       |                    | 1                  | 1                        |                             |       |
| 6   | G    | S70 E70 400 | COMPRESSOR                  | ANB52FRNMT            |                    | 1                  | 1                        |                             | MC    |
| 7   | G    | S70 E02 004 | RUBBER MOUNT                | 1 PC/ SET             |                    | 4                  | 4                        |                             |       |
| 8   | G    | S70 600 418 | STOP VALVE (LIQUID)         | 3/8'                  |                    | 1                  |                          |                             |       |
|     | G    | S70 700 418 | STOP VALVE (LIQUID)         | 1/2'                  |                    |                    | 1                        |                             |       |
| 9   | G    | S70 E08 411 | BALL VALVE (GAS)            | 3/4'                  |                    | 1                  | 1                        |                             |       |
| 10  | G    | S70 E95 440 | POWER RECEIVER              |                       |                    | 1                  | 1                        |                             |       |
| 11  | G    | S70 42L 450 | STRAINER                    | 50#                   |                    | 1                  | 1                        |                             |       |
| 12  | G    | S70 E69 202 | THERMISTOR                  | Comp. surface         |                    | 1                  | 1                        |                             | TH32  |
| 13  | G    | S70 E02 413 | CHARGE PLUG                 |                       |                    | 2                  | 2                        |                             |       |
| 14  | G    | S70 E58 202 | THERMISTOR                  | Liquid                |                    | 1                  | 1                        |                             | TH3   |
| 15  | G    | S70 E09 242 | SOLENOID COIL <4-WAY VALVE> |                       |                    | 1                  | 1                        |                             | 21S4  |
| 16  | G    | S70 E06 403 | 4-WAY VALVE                 |                       |                    | 1                  | 1                        |                             |       |
| 17  | G    | S70 E15 401 | EXPANSION VALVE             | UKV-32D               |                    | 1                  | 1                        |                             |       |
| 18  | G    | S70 E30 402 | LINEAR EXPANSION VALVE COIL | UKV-A277              |                    | 1                  | 1                        | CONNECTOR: WHITE            | LEV-A |
| 19  | G    | S70 E31 202 | THERMISTOR                  | Ambient, 2-phase pipe |                    | 1                  | 1                        |                             | TH6,7 |
| 20  | G    | S70 E10 208 | HIGH PRESSURE SWITCH        | OFF 4.14 MPA          |                    | 1                  | 1                        |                             | 63H   |
| 21  | G    | S70 E09 716 | TERMINAL BED                | 5P(L1,L2,L3 N,E)      |                    | 1                  | 1                        |                             | TB1   |
| 22  | G    | S70 E08 716 | TERMINAL BED                | 3P(S1,S2,S3)          |                    | 1                  | 1                        |                             | TB2   |
| 23  | G    | S70 K25 259 | REACTOR                     |                       |                    | 1                  | 1                        |                             | ACL4  |
| 24  | G    | S70 E45 313 | POWER CIRCUIT BOARD         |                       |                    | 1                  | 1                        |                             | P.B.  |
| 25  | G    | S70 K35 259 | REACTOR                     |                       |                    | 1                  | 1                        |                             | DCL   |
| 26  | G    | S70 E55 202 | THERMISTOR                  | Heat sink             |                    | 1                  | 1                        |                             | TH8   |
| 27  | G    | S70 E20 234 | RESISTOR                    |                       |                    | 1                  | 1                        |                             | RS    |
| 28  | G    | S70 E70 346 | NOISE FILTER CIRCUIT BOARD  |                       |                    | 1                  | 1                        |                             | N.F.  |
| 29  | G    | S70 E99 315 | CONTROLLER CIRCUIT BOARD    |                       |                    | 1                  | 1                        |                             | C.B.  |

# RoHS PARTS LIST

## STRUCTURAL PARTS

PUHZ-ZRP100VKA3.UK

PUHZ-ZRP100YKA3.UK

PUHZ-ZRP100YKA3R1.UK

PUHZ-ZRP125VKA3.UK

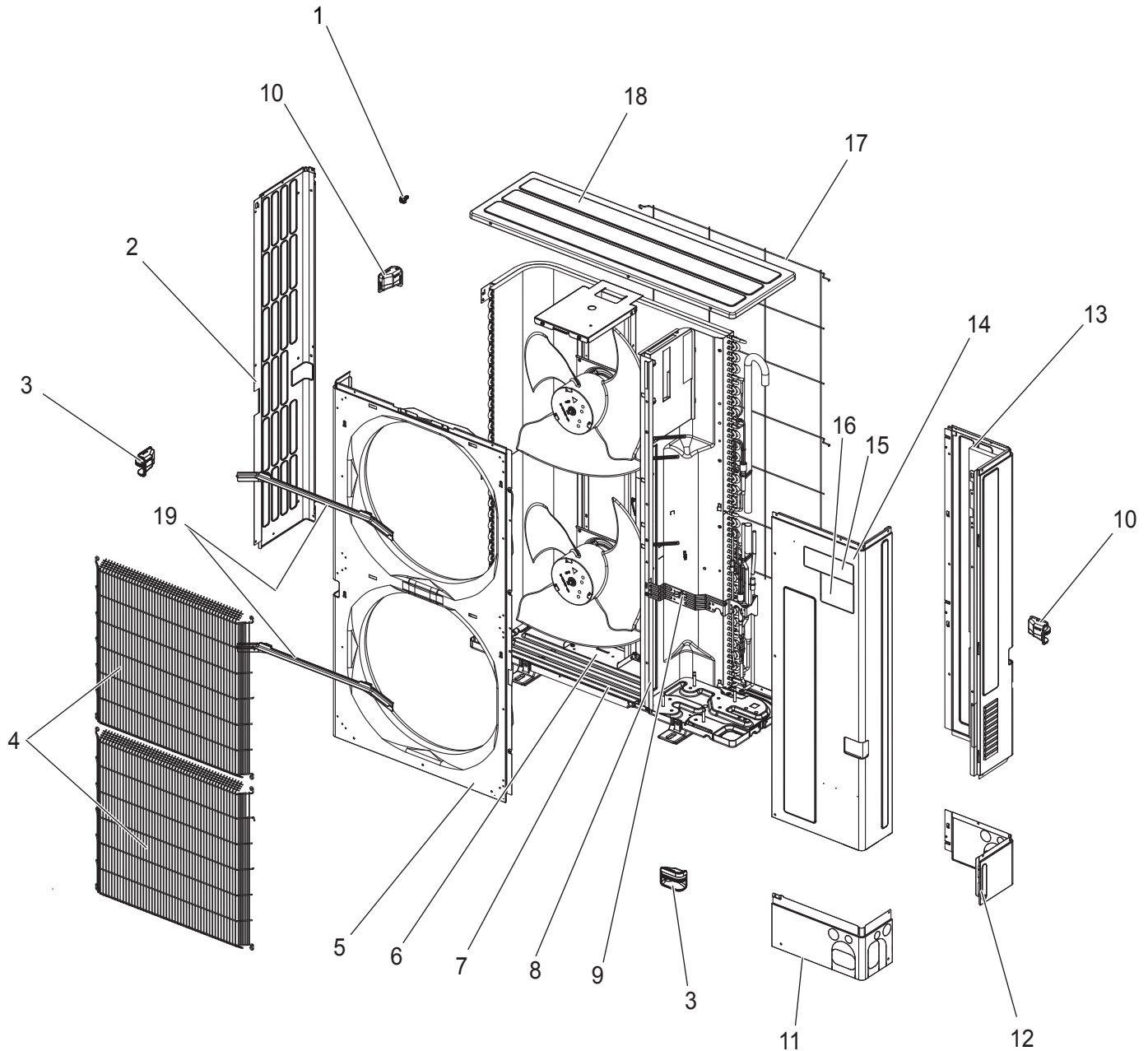
PUHZ-ZRP125YKA3.UK

PUHZ-ZRP125YKA3R1.UK

PUHZ-ZRP140VKA3.UK

PUHZ-ZRP140YKA3.UK

PUHZ-ZRP140YKA3R1.UK



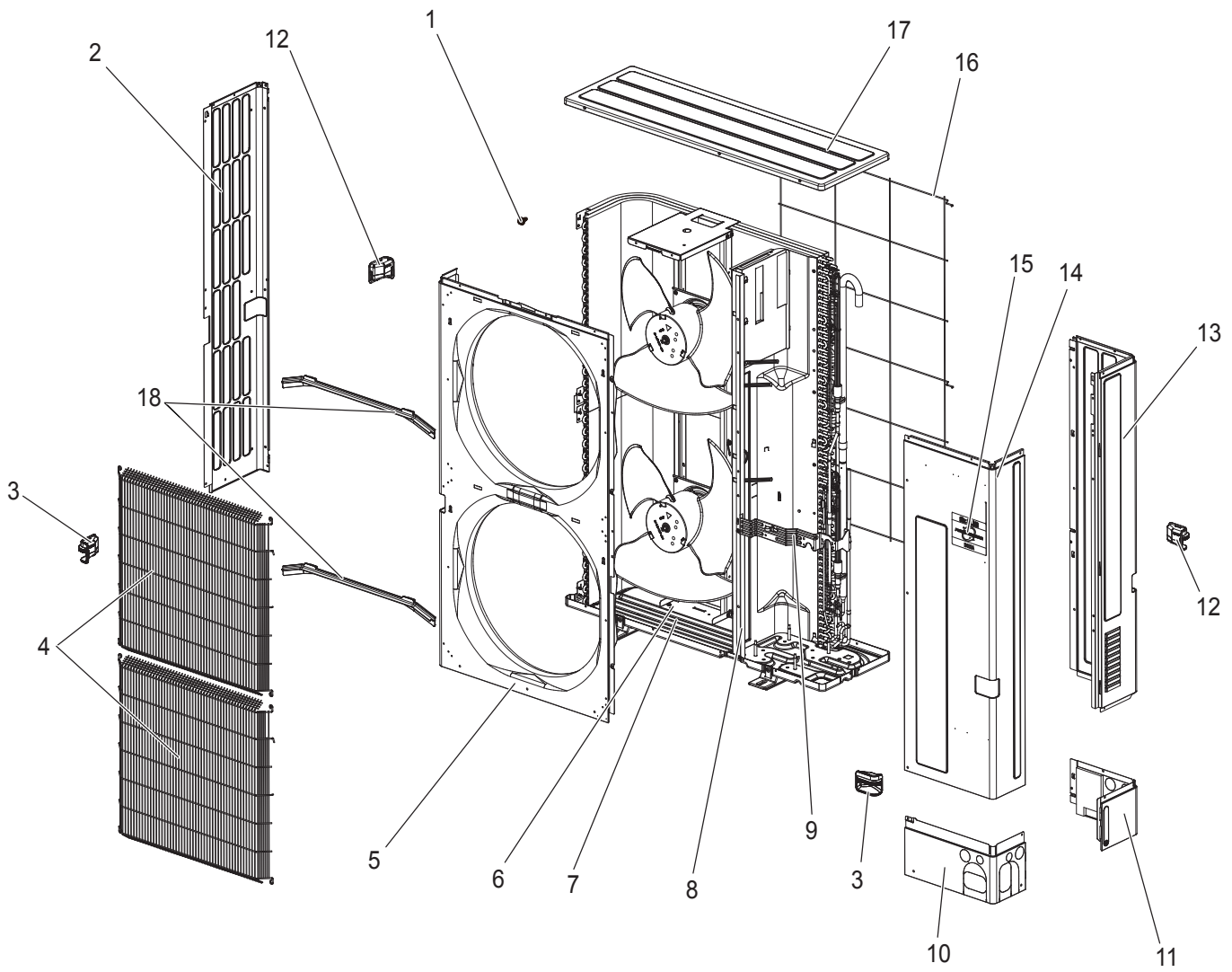
# RoHS PARTS LIST

| No. | RoHS | Parts No.   | Parts Name          | Specifi-<br>cation | Q'ty/unit          |                    |                    |                    |                      |                    |                      |                    | Remarks<br>(Drawing No.) |                      |
|-----|------|-------------|---------------------|--------------------|--------------------|--------------------|--------------------|--------------------|----------------------|--------------------|----------------------|--------------------|--------------------------|----------------------|
|     |      |             |                     |                    | PUHZ-ZRP100VKA3.UK | PUHZ-ZRP125VKA3.UK | PUHZ-ZRP140VKA3.UK | PUHZ-ZRP100YKA3.UK | PUHZ-ZRP100YKA3R1.UK | PUHZ-ZRP125YKA3.UK | PUHZ-ZRP125YKA3R1.UK | PUHZ-ZRP140YKA3.UK |                          | PUHZ-ZRP140YKA3R1.UK |
| 1   | G    | —           | F.ST SCREW          | (5×12)             | 45                 | 45                 | 45                 | 45                 | 45                   | 45                 | 45                   | 45                 | 45                       | (DG12F536H12)        |
| 2   | G    | S70 E17 662 | SIDE PANEL (L)      |                    | 1                  | 1                  | 1                  | 1                  | 1                    | 1                  | 1                    | 1                  | 1                        |                      |
| 3   | G    | S70 E20 655 | HANDLE (FRONT)      |                    | 2                  | 2                  | 2                  | 2                  | 2                    | 2                  | 2                    | 2                  | 2                        |                      |
| 4   | G    | S70 E40 675 | FAN GRILLE          |                    | 2                  | 2                  | 2                  | 2                  | 2                    | 2                  | 2                    | 2                  | 2                        |                      |
| 5   | G    | S70 E61 668 | FRONT PANEL         |                    | 1                  | 1                  | 1                  | 1                  | 1                    | 1                  | 1                    | 1                  | 1                        |                      |
| 6   | G    | S70 E90 130 | MOTOR SUPPORT       |                    | 1                  | 1                  | 1                  | 1                  | 1                    | 1                  | 1                    | 1                  | 1                        |                      |
| 7   | G    | S70 E91 686 | BASE ASSY           |                    | 1                  | 1                  | 1                  | 1                  | 1                    | 1                  | 1                    | 1                  | 1                        |                      |
| 8   | G    | —           | SEPARATOR           |                    | 1                  | 1                  |                    |                    |                      |                    |                      |                    |                          | (BK00N021G56)        |
|     | G    | —           | SEPARATOR           |                    |                    |                    | 1                  |                    |                      |                    |                      |                    |                          | (BK00N021G57)        |
|     | G    | —           | SEPARATOR           |                    |                    |                    |                    | 1                  | 1                    | 1                  | 1                    |                    |                          | (BK00N021G58)        |
|     | G    | —           | SEPARATOR           |                    |                    |                    |                    |                    |                      |                    |                      | 1                  | 1                        | (BK00N021G59)        |
| 9   | G    | —           | VALVE BED ASSY      |                    | 1                  | 1                  | 1                  | 1                  | 1                    | 1                  | 1                    | 1                  | 1                        | (BK00R803G03)        |
| 10  | G    | S70 E30 655 | HANDLE (REAR)       |                    | 2                  | 2                  | 2                  | 2                  | 2                    | 2                  | 2                    | 2                  | 2                        |                      |
| 11  | G    | S70 E55 658 | COVER PANEL (FRONT) |                    | 1                  | 1                  | 1                  | 1                  | 1                    | 1                  | 1                    | 1                  | 1                        |                      |
| 12  | G    | S70 E65 658 | COVER PANEL (REAR)  |                    | 1                  | 1                  | 1                  | 1                  | 1                    | 1                  | 1                    | 1                  | 1                        |                      |
| 13  | G    | S70 E95 662 | SIDE PANEL (R)      |                    | 1                  | 1                  | 1                  | 1                  | 1                    | 1                  | 1                    | 1                  | 1                        |                      |
| 14  | G    | S70 E45 661 | SERVICE PANEL       |                    | 1                  | 1                  | 1                  | 1                  | 1                    | 1                  | 1                    | 1                  | 1                        |                      |
| 15  | G    | S70 E40 699 | LABEL (BRAND)       |                    | 1                  | 1                  | 1                  | 1                  | 1                    | 1                  | 1                    | 1                  | 1                        |                      |
| 16  | G    | S70 E60 699 | LABEL (MITSUBISHI)  |                    | 1                  | 1                  | 1                  | 1                  | 1                    | 1                  | 1                    | 1                  | 1                        |                      |
| 17  | G    | S70 E30 698 | REAR GUARD          |                    | 1                  | 1                  | 1                  | 1                  | 1                    | 1                  | 1                    | 1                  | 1                        |                      |
| 18  | G    | S70 E40 641 | TOP PANEL           |                    | 1                  | 1                  | 1                  | 1                  | 1                    | 1                  | 1                    | 1                  | 1                        |                      |
| 19  | G    | S70 E10 631 | ICE GUARD           |                    | 2                  | 2                  | 2                  | 2                  | 2                    | 2                  | 2                    | 2                  | 2                        |                      |

# RoHS PARTS LIST

STRUCTURAL PARTS  
PUHZ-ZRP200YKA2.UK

PUHZ-ZRP250YKA2.UK



# RoHS PARTS LIST

| No. | RoHS | Parts No.   | Parts Name          | Specification | Q'ty/unit          |                    | Remarks<br>(Drawing No.) |
|-----|------|-------------|---------------------|---------------|--------------------|--------------------|--------------------------|
|     |      |             |                     |               | PUHZ-ZRP200YKA2.UK | PUHZ-ZRP250YKA2.UK |                          |
| 1   | G    | —           | F.ST SCREW          | (5×12)        | 45                 | 45                 | (DG12F536H12)            |
| 2   | G    | S70 E17 662 | SIDE PANEL (L)      |               | 1                  | 1                  |                          |
| 3   | G    | S70 E20 655 | HANDLE (FRONT)      |               | 2                  | 2                  |                          |
| 4   | G    | S70 E40 675 | FAN GRILLE          |               | 2                  | 2                  |                          |
| 5   | G    | S70 E61 668 | FRONT PANEL         |               | 1                  | 1                  |                          |
| 6   | G    | S70 E95 130 | MOTOR SUPPORT       |               | 1                  | 1                  |                          |
| 7   | G    | S70 E91 686 | BASE ASSY           |               | 1                  | 1                  |                          |
| 8   | G    | —           | SEPARATOR           |               | 1                  | 1                  | (BK00N021G60)            |
| 9   | G    | —           | VALVE BED ASSY      |               | 1                  | 1                  | (BK00R803G03)            |
| 10  | G    | S70 E55 658 | COVER PANEL (FRONT) |               | 1                  | 1                  |                          |
| 11  | G    | S70 E65 658 | COVER PANEL (REAR)  |               | 1                  | 1                  |                          |
| 12  | G    | S70 E30 655 | HANDLE (REAR)       |               | 2                  | 2                  |                          |
| 13  | G    | S70 E18 662 | SIDE PANEL (R)      |               | 1                  | 1                  |                          |
| 14  | G    | S70 E45 661 | SERVICE PANEL       |               | 1                  | 1                  |                          |
| 15  | G    | S70 E40 699 | LABEL (BRAND)       |               | 1                  | 1                  |                          |
| 16  | G    | S70 E30 698 | REAR GUARD          |               | 1                  | 1                  |                          |
| 17  | G    | S70 E40 641 | TOP PANEL           |               | 1                  | 1                  |                          |
| 18  | G    | S70 E10 631 | ICE GUARD           |               | 2                  | 2                  |                          |

**Mr. SLIM**

**mitsubishi electric corporation**

HEAD OFFICE : TOKYO BUILDING, 2-7-3, MARUNOUCHI, CHIYODA-KU, TOKYO 100-8310, JAPAN